

2022 COMMUNITY BENEFIT REPORT

(FOR THE 12-MONTH PERIOD ENDING DECEMBER 31, 2022)



Kingman Healthcare Incorporated, d.b.a. Kingman Regional Medical Center is dedicated to enhancing health and quality of life in our vibrant, growing community. KRMC strives to partner with and support local organizations and initiatives that benefit our citizens. This report details KRMC's contributions to our community during the calendar year 2022.

Rev. 01/23

Kingman Regional Medical Center
3269 Stockton Hill Road
Kingman, Arizona 86409
(928) 757-2101
www.azkrmc.com



PREVENTION | DIAGNOSIS | TREATMENT | RECOVERY



About Kingman Regional Medical Center

Kingman Regional Medical Center (KRMC) is a non-profit healthcare system located in Kingman, Arizona. We serve an approximate 10,000 square-mile geographic area called Hospital District Number One of Mohave County. Our service area population is approximately 80,000.

KRMC operates a 235-bed acute care hospital. Additionally, our multi-campus healthcare system provides a full range of health and wellness services, including advanced medical programs in cardiology, cancer, wound care, rehabilitation, home health, and hospice care. Our services also include primary and specialty care physician practices and a state-of-the-art wellness and fitness center.

KRMC is honored to be a member of the Mayo Clinic Care Network. KRMC also serves as a teaching hospital in affiliation with Midwestern University. Through this partnership, we provide residency training to doctors specializing in family practice and emergency medicine.

KRMC’s mission is to “inspire and partner with our community to achieve optimal health— mind, body, and spirit.” KRMC’s vision is to “be among the kindest, highest quality health systems in the country.”

Care by the numbers

The following statistics reflect KRMC’s service to our community in 2022..



50,577

Emergency Dept. Visits



7,457

Hospital Admissions



1,980

Inpatient Surgical Cases



4,797

Outpatient Surgical Cases



684

Babies Delivered



285,779

Outpatient Visits



A Major Contributor to the Local Economy and Community Wellbeing

A strong, growing hospital with skilled physicians and quality healthcare services is vital to Kingman and the surrounding communities. Over the past decade, KRMC has continued to expand to meet the healthcare needs of our community.

KRMC is the largest employer in Mohave County with a current **payroll of over \$151.8 million**. Additionally, KRMC is a large consumer of local goods and services. We spend over **\$10 million per year** with community businesses.

We also provide education and employment opportunities to our community. We coordinate with local high schools to inform students of career opportunities in the healthcare industry. We partner with Mohave Community College and state universities to hire graduating healthcare workers. We

also fund scholarships to help local students who are pursuing careers in healthcare. Additionally, we provide tuition reimbursement to current employees seeking to advance their careers

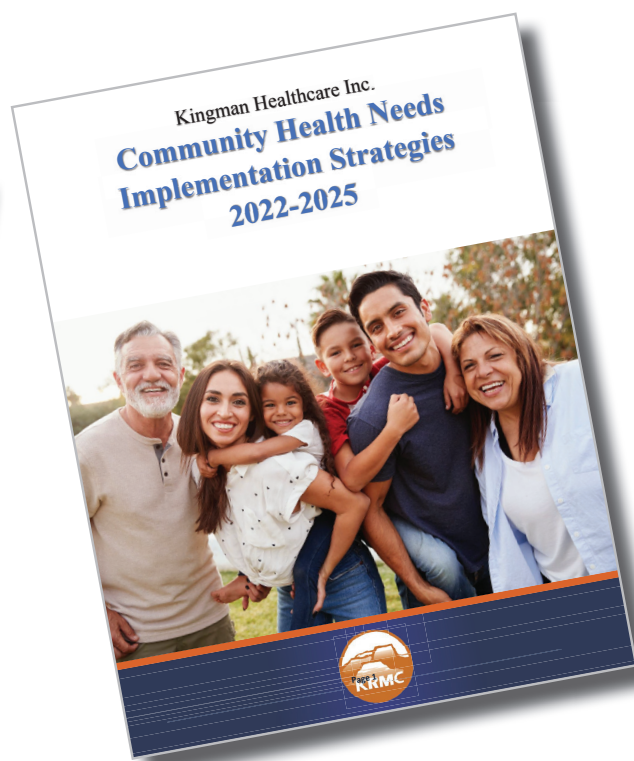
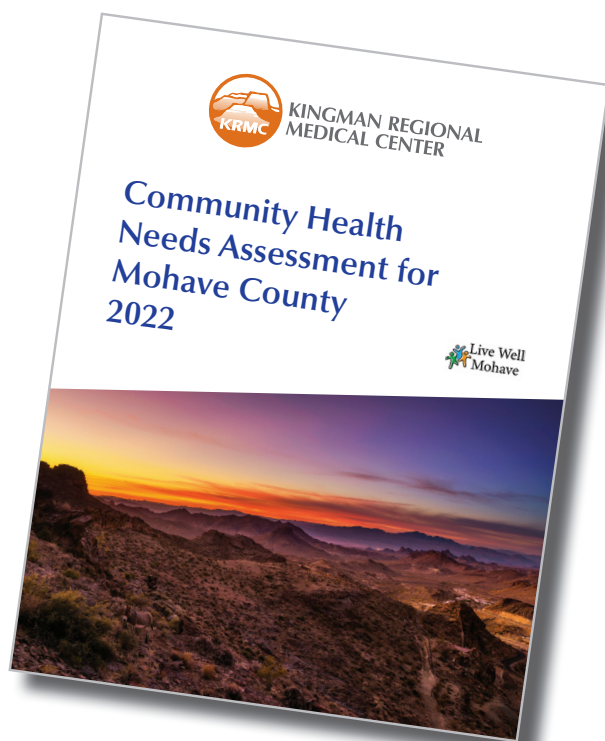
Addressing health priorities in our community

Since 2012, Kingman Regional Medical Center has partnered with the Mohave County Department of Public Health (MCDPH) to lead a broad community health initiative for improving health and quality of life in Mohave County communities.

The initiative, called “Live Well Mohave,” engages the public and community stakeholders to make measurable improvements in community health. Stakeholders represent most sectors of our community, including city and county government, Tribal organizations, healthcare providers, mental health providers, businesses, local charitable organizations, faith organizations, law enforcement, courts, schools, colleges, and multiple community service organizations.

The initiative involves the following process, which is conducted on a three-year cycle. The most recent cycle was completed in 2022.

1. Researchers collect facts and statistics regarding health and quality of life in Mohave County. This process includes obtaining insights from the public and community stakeholders through surveys and interviews. The information is then published in a report called a **Community Health Needs Assessment (CHNA)**.
2. Based on the information in the CHNA, we work with community members and stakeholders to identify priority health issues. Those groups develop a plan to address the chosen priorities in their local area. We document the results of these planning efforts in a **Community Health Improvement Plan (CHIP)** for each region.
3. Based on the CHNA and CHIP, KRMC develops a strategic plan for addressing health needs identified and prioritized by the community. The plan is documented in a report called **Kingman Healthcare Inc. Community Health Needs Implementation Strategies**.





Giving back to our community

KRMC has a long-standing history of providing financial support to community agencies, organizations, and programs that benefit our residents, especially our most vulnerable citizens— children, elderly, those in ill health, and those in socioeconomic distress.

During 2022, KRMC provided a total of **\$225,570** through its **Community Benefit Program** to support local organizations that contribute to community wellbeing and quality of life. Community partners who received KRMC contributions in 2022 include:

- Annie’s Art Attic
- American Cancer Society
- Arizona Youth Partnership
- AZ Claus Cause
- CASA of Mohave County
- City of Kingman
- City of Kingman Police Dept.
- Colorado River Area Trail Alliance
- C.O.P.S. Arizona
- Cornerstone Mission
- Desert Sun Volleyball
- Dig It Kingman Community Gardens
- Friends of Mohave County Animal Shelter
- Jerry Ambrose Veteran’s Council
- Journey to the Center of Hope
- KAOL Varsity Football
- Katherine Heidenreich Senior Center
- Kingman 66 Special Olympics
- Kingman Academy High School
- Kingman Aid to Abused People (KAAP)
- Kingman Area Food Bank
- Kingman Cancer Care Unit
- Kingman Cares Foundation
- Kingman Center for the Arts
- Kingman Downtown Merchants
- Kingman Elks
- Kingman FIRST Robotics
- Kingman Healing Hooves
- Kingman High School
- Kingman Little League
- Kingman Police Explorers
- Kingman Rebels – Youth Football
- Kingman Rt. 66 Horseshoe Pitching
- Kingman Rt. 66 Rotary Club
- Kingman Sidewinders
- Kingman Youth Soccer League
- Kingsmen PRCA Rodeo
- Live Well Mohave
- Manzanita Elementary School
- Mission Bank – Our Town Cares
- Mohave County Donation Center
- Mohave County Human Trafficking Coalition
- Mohave Community Choir
- MSTEPP
- Nana’s Pantry
- Our Town Cares
- Pistoleros & Roses
- Route 66 Fun Run
- Route 66 Street Drags
- Salvation Army
- SheStrong
- St. Mary’s Church
- Tri-State Veterans Honor Trust
- Yucca Community Food Bank



Charity care and non-billed health services

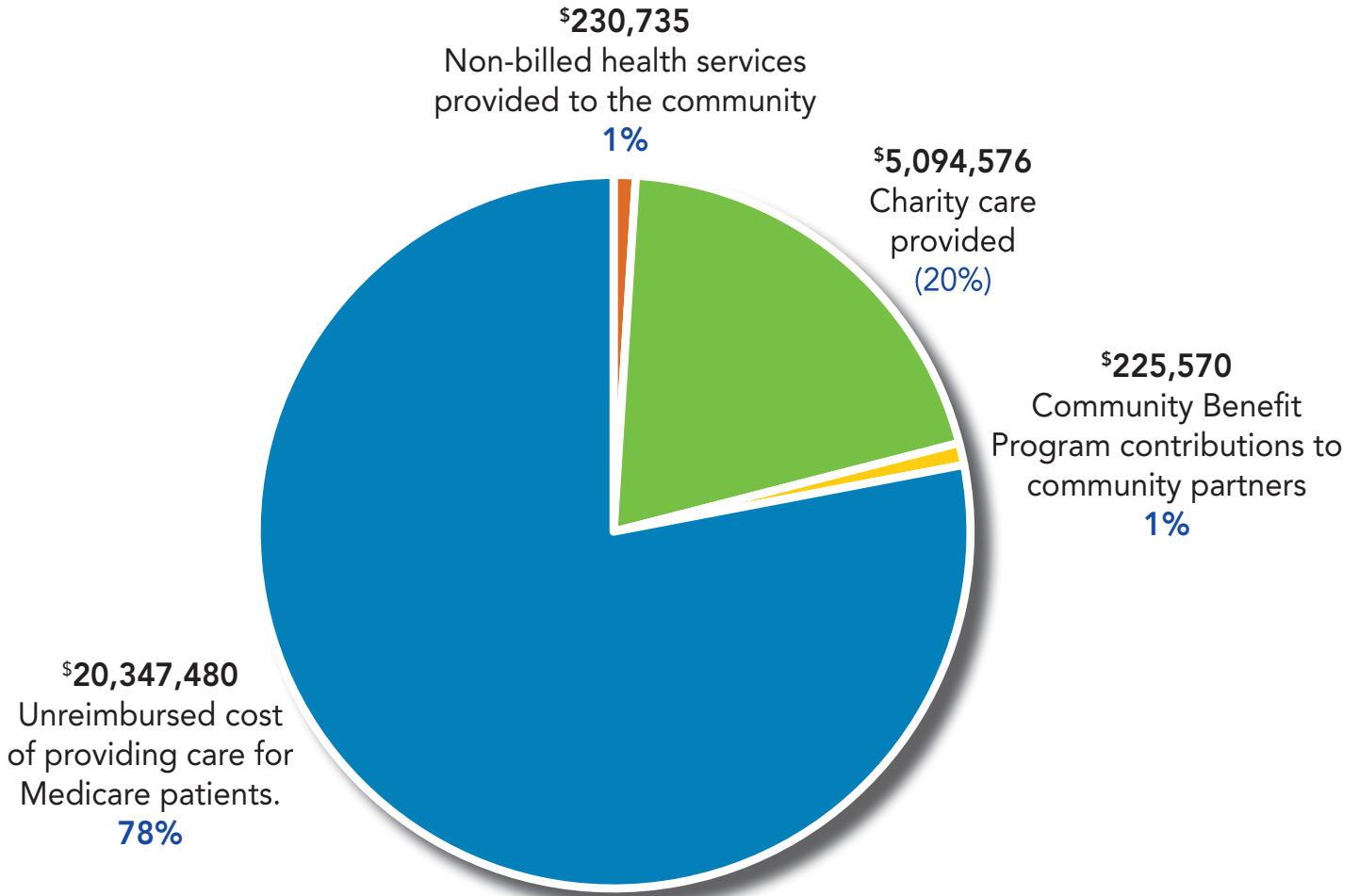
KRMC provides financial assistance (called charity care) to people unable to pay for necessary emergency care, hospitalization, or other medically necessary tests or treatments. Eligibility and the amount of financial assistance provided is based on household size and income. During 2022, KRMC provided **\$5,094,576 in charity care.**

Additionally, KRMC provides a variety of other non-billed services to assist individual patient needs. These can include assistance with transportation, medications, medical equipment, etc. During 2022, KRMC provided **\$230,735 in non-billed health services.**

Total Community Benefit Value

In 2022, KRMC provided community benefits with a total value of more than **\$25.8 million**. Much of this involved providing charity care to patients with no insurance or insurance that did not fully reimburse KRMC's expenses. KRMC also provides care for thousands of patients covered by Medicare. The total expense of providing that care far exceeds the payment KRMC receives from the Medicare system.

Total Community Benefit \$25,898,361



**KINGMAN REGIONAL
MEDICAL CENTER**